



**MAY, 2011**

**Petaluma Readers  
Theater at Riverfront**

**Featured Artists:  
Martin Bauman  
Jeffrey Williams**

**Member News**

**"Showin' On The River!"  
Call for Artists**

**Kate Willens at  
Reception**

\* \*

**Gallery Offerings:**

**Acrylics**

**Mixed Media**

**Oils**

**Photography**

**Photomontage**

**Watercolors**

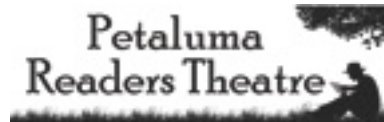
[www.riverfrontartgallery.com](http://www.riverfrontartgallery.com)

(707) 775-4278

## THE GALLERY'S NEW SHOW

**Late Spring Show dates: May 11 - July 10**  
**Show Reception and May Art Walk: Saturday, May 14, 5 PM - 9 PM**

**Musical interludes provided by Kate Willens on celtic folk harp.**



**MAY 20 & 21, AT RIVERFRONT ART GALLERY**  
**PETALUMA READERS THEATRE PRESENTS**  
**A MILLION WAYS TO GO**

[www.petalumareaderstheatre.com](http://www.petalumareaderstheatre.com)

Petaluma Readers Theatre is a group of actors who read stories at various locations, rather than staging them in a theater. There is an interesting "up close" dynamic to this type of presentation. Actors (Maureen Studer, Hilary Moore, Roger Marquis, and Jared Dreyfus) will entertain the audience with travel stories from *A Million Ways to Go*.

Director Nancy Long, says, "The notion of travel conjures a multitude of ideas and images from the streets of Pamplona to train tracks in Texas, following authors from our favorite locals to stars like Tom Wolfe through the streets of San Francisco and onto the plains of Kenya, from retreats from reality to the killing fields of Cambodia. Come with us as we explore the many faces of travel. There really are *A Million Ways to Go*."

The performance will take place after the gallery closes, running from 8:00 to 9:30 on Friday, May 20, and Saturday, May 21. Tickets are \$12 at the gallery or online through Brown Paper Tickets. [www.brownpapertickets.com](http://www.brownpapertickets.com) What a lovely idea--art and theater together! Seating is limited. Be quick!

### GALLERY HOURS SPRING THROUGH FALL

Wednesday, Thursday, Sunday  
11:00 AM - 7:00 PM

Friday & Saturday  
11:00 AM - 8:00 PM

Closed Monday & Tuesday

**FEATURED ARTIST: JEFFREY T. WILLIAMS**

**“THE NEW YOSEMITE PERSPECTIVE, A NEW AMERICAN LANDSCAPE CONCEPT”**

You dangle against the face of El Capitan, a sheer granite cliff rising 2900 feet above Yosemite Valley. Rocked by the wind as you hang there, you survey the scene. Below you lies the route you have taken to reach this height. Most of humanity would be terrified, but you calmly pull out your camera to record what you see from your perch on the cliff--the fissures in the granite face, talus slope of fallen rock, mounded tops of trees on the valley floor, glimpses of the Merced River as it ribbons its way down the valley--a true bird's-eye view of the landscape spread out below.

Featured Artist Jeffrey T. Williams is inspired by that perspective with thousands of feet of rock intersecting the earth with no reference to the sky! It is that bird's-eye perspective which he converts into oils and watercolors in a series he calls *The New Yosemite Perspective*. As Jeffrey explains, “Artists have been painting the American landscape for centuries now. A central concept is that every landscape has a real or implied perspective that includes a horizon between earth and sky. But rock climbers have a perspective that the average person never sees. That’s what I paint. It is the landscape at its most special and most meaningful for me.”

The uniqueness of the climber’s vantage point first came to Jeffrey in his younger days. While he studied art in college, he spent summers in Yosemite rock climbing and, as he puts it “living the gypsy life in Camp 4.” Eventually he was skillful enough to climb “the big walls” and to work at the Yosemite Mountaineering School.



*Rockscape 77* Watercolor on paper 16"x20"

“It was while climbing the face of Half Dome,” Jeffrey recalls, “that I originally got the idea about redefining the painting of the American Landscape.” By that he means using his climber’s perspective to present the real landscape in a totally new and different way.

Jeffrey’s paintings are realistic representations of the world as he has seen it on so many occasions. Yet the unusual perspective imbues the paintings with an

abstract, perhaps even a surrealistic, quality that has viewers contemplating a scene that is vaguely familiar and yet not familiar at all. This is Jeffrey’s personal stamp upon the great tradition of painting “the American Landscape,” especially the grandeur of Yosemite--a compelling place so often painted and photographed, but never as uniquely as Jeffrey presents it.

[www.jeffreytwilliams.com](http://www.jeffreytwilliams.com)



left:  
1500 Feet,  
*The Nose Route,*  
*El Capitan, Yosemite*  
oil on linen; 48"x60"

center:  
2100 Feet, *The Nose,*  
*El Capitan, Yosemite*  
oil on canvas, 24"x30"

right:  
2300 Feet, *Pitch 29,*  
*Muir Wall, Yosemite*  
oil on line; 48"x60"

## FEATURED ARTIST: MARTIN BAUMAN

### “THE LIMINAL ZONE”

Featured Artist Martin Bauman has an open approach to watercolor painting--spontaneous unintentional painting and then careful intentional selection of the final piece. Martin often refers to his pieces as watercolor poems.

The title of Martin's show is “The Liminal Zone.” He says it is “an exploration into the space between the outer world and inner space, a glimpse of the edges between reality and imagination, between the waking and sleeping state.” As a psychotherapist, Martin is drawn to the inherent complexity of anything that simultaneously reflects both chaos and order. In his art, the result is works that are concrete yet ephemeral, as are his musical compositions and music videos.

Martin explains his work this way: “The shapes, forms and images emerge on the paper before it dries. The image then gradually takes shape ‘internally.’ We try to make sense of the random shapes (sometimes nudged by the pen). It boils down to the need to make sense out of the shapes and colors, thus each person see’s what is important to them and constructs meaning out of the random shapes.

“The paintings are not meant for immediate appeal and attractiveness, but demand a more reflective and meditative state of connection. The paintings may change meaning over time and thus they are unnamed leaving that possibility up to the viewer.



“Hopefully there remain more questions than answers. Often the meaning quickly changes as viewpoints diverge.

“The interest and curiosity is the presence of view of a world of interest and possibility. On paper we have but a small part of it, as it may be a fragment of another universe, like ours, but simultaneously different.”

“The important thing,” Martin will tell you, “is the excitement of placing paint, water, and paper together and curiosity about what will happen, (adding a little ink), and then deciding when is *enough*.”

[www.soundimago.com](http://www.soundimago.com)

and on the Internet: martin bauman flickr



**Call for Entries:**

**“Showin’ On The River!”**

**Riverfront Art Gallery’s  
Fine Art Juried Show**

**Entry deadline: June 4th**

For entry guidelines, please go to  
[www.riverfrontartgallery.com](http://www.riverfrontartgallery.com).

**Under Contact Us, click on Call for Entries**



**KATE WILLENS  
AT RIVERFRONT  
RECEPTION ON  
MAY 14**

Kate Willens, local music teacher and harp therapist, specializes in the Celtic musical tradition. Once lead singer for the Celtic band Open Secret, she also puts poetry to music, writes poems, and is working on songs with a positive message.

**AROUND TOWN**

**Riverfront Artists  
At Viva Cocolat!  
110 Petaluma Blvd. N.  
Petaluma, CA  
beginning May 18  
Antique car images  
from past *American  
Graffiti* parades.**

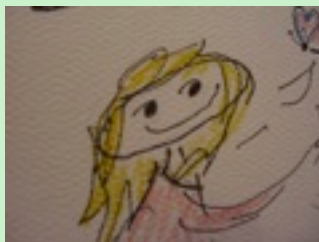


**Cathy Thomas is participating in  
PAA’s *Art Around Town* at Boulevard Cafe  
1096 Petaluma Blvd., Petaluma, CA**



**Gus Feissel’s  
Venice Carnival images  
currently at  
Dukes & Dolls  
Hair Salon  
25 Kentucky St.  
Petaluma, CA**

**Watch for Sickey!  
Christine Kierstead’s  
delightful character,  
Sickey Sickerson.  
debuts in May.  
Check the gallery  
card rack!**

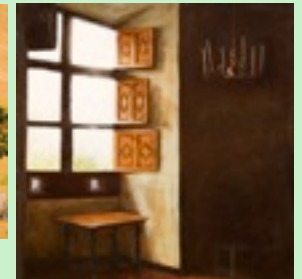


**MEMBER NEWS**

**Riverfront Members,  
Karen Spratt and Lance Kuehne  
are among the  
Seventh Street Studios Artists  
featured at Gallery One  
209 Western Avenue, Petaluma, CA  
May 16-July 3; Reception May 21, 5:00-8:00**



Lance Kuehne  
*Grazin’ in the Shade*



Karen Spratt *Window,  
Azasy-le-Rideau*

**Karen Spratt’s paintings are also at Cuchina  
Paradiso, 114 Petaluma Blvd. N, Petaluma, CA**

**John Hanes, Featured Artist**



**at The Village  
Shops & Galleries  
10330 San Pablo Ave.  
El Cerrito, CA  
May 14-June 17  
Tues-Sat, noon to 5:00**

Lost Coast #1