



JULY, 2011

**Second Annual
"Showin' On The River!"
Fine Art Painting &
Drawing Show**

**Guest Artist:
Mark St. Michael**

**Art Walk Event:
"Riverfront
Extravaganza"
Sale & Raffle**

* *

Gallery Offerings:

Acrylics

Mixed Media

Oils

Photography

Photomontage

Watercolors

**Find us/Friend us
on Facebook!**

www.riverfrontartgallery.com

(707) 775-4278

THE GALLERY'S NEW SHOW

Summer Show dates: July 13 - September 11

Art Walk: Saturday, July 9, 4 PM - 8 PM

Show Reception: Saturday, July 16, 4 PM - 9 PM

"SHOWIN' ON THE RIVER!" SEMI-ANNUAL EVENT

Emails arrive with images attached; envelopes are dropped off with prints inside; original works are brought for "in person" viewing. The entry deadline is near. Interest mounts. Which of this accumulated mass of entires will ultimately be juried into Riverfront's second annual "Showin' On The River!" Fine Art Show?

After considerable deliberation, the works of 32 artists were accepted with subject matter running the gamut from floral to landscape, still life to town views, wine country to abstracts. Media include acrylics, oils, and watercolors, as well as pastels. The fine line work of both graphite and pen and ink drawings are present. Mixed media and collage works always add an unexpected touch, including some surrealistic pieces. Works in metals increase the diversity. It is a show with something for everyone.

Many artists will be at the reception on Saturday evening, July 16. Do come to talk with them and to appreciate all of this distinctive local talent. For a sneak preview, see pages 3 through 5. This is just a teaser; there will be lots of additional works and more artists at the gallery.

As backdrop for the reception, musical interludes will be provided by "Half Bad Neighbor," playing American folk and country music--and it is rumored that they ain't half bad (grin).

GALLERY HOURS SPRING THROUGH FALL

Wednesday, Thursday, Sunday
11:00 AM - 7:00 PM

Friday & Saturday
11:00 AM - 8:00 PM

Closed Monday & Tuesday

GUEST ARTIST: MARK ST. MICHAEL



Heart of Nature, Heart of Grace



Sanctuary of the Heart

Sculptor, Mark St. Michael is currently showing works from “The Stillness Within” series. The pieces are carved from white translucent Italian alabaster and salmon Utah alabaster.

The series features heart shapes nestled within a caressing form. Some, like the *Sanctuary of the Heart* pieces, are small enough to tuck into a little personal space. Others, such as *Heart of Nature*, *Heart of Grace*, are large, free-standing works that make a bolder statement.

Mark says, “We all need and want a place to feel love, to feel welcomed and cared for, and a place to find refuge in our connection to The Divine.” Mark’s “The Stillness Within” pieces represent that place.

SPECIAL ART WALK EVENT: “RIVERFRONT EXTRAVAGANZA” SALE & RAFFLE

DURING THE JULY ART WALK RECEPTION, JULY 9, 4:00 - 8:00

Saturday July 9th, is a special Art Walk at Riverfront Art Gallery. Many of our artists are putting their original and limited edition works on sale. That special piece you’ve been looking for is likely priced irresistibly. Come in and see what unique works are being offered. As always, we will have tasty nibbles and a variety of tempting refreshments.

A SAMPLING OF IMAGES FROM "SHOWIN' ON THE RIVER!"
RIVERFRONT'S JURIED FINE ART SHOW

"Farm Animal #6"
Shannon Abbey



"Pointed Yellow Tulip"
Roberta Ahrens



"Almost There"
Carole Barlas



"Strawberries"
Jan K. Brown



"Sunset I"
Christopher Bryant



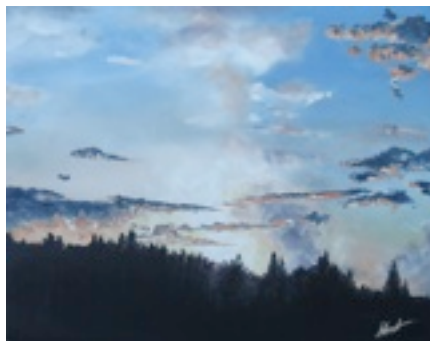
"Autumn Harvest"
Kathy Byrne



"Blue Oaks Near Cache Creek"
Margaret Eldred



"Morning Sky"
Adam French



"Moonbow"
Karen Griswold



"Chez Julien"
Muriel Goodfield



"Go With the Flow"
Ruth Hall



"Flights of Fancy"
Kirk Hinshaw



"Cupric Phenomenon"
Hobart Humphrey



"Mademoiselle Fi Fi"
Muriel Sutchter Knapp



"A Little Lavender"
Linda L. Landon



"Spell"
Keith Kilburn



"At Galaxidi"
Marjorie Lutz



"Net Menders"
Jack A. Lutxon



“Antique Door”
Helen Mehl



“Sunrise Over the Laguna”
Fran Neilsen



“Sonoma Villa”
Penny Popken



“Coastal Grasses”
Jennifer Robin



“Iris May”
Marcy Silveria



“View from Water Street”
Peggy Sebera



“Poppy Field”
Cheryl Thompson



“Landmarks”
Phyllis Calvin Thomas



“Bend in the River”
Henry White

