



FEBRUARY, 2012

**Current Show**

**Monty Monty's  
Fantasy Vehicles**

**Greg Zirbel's  
Landmark Birdhouses**

**Photography Workshop**

\* \*

**Gallery Offerings:**

**Acrylics**

**Mixed Media**

**Oils**

**Photography**

**Photomontage**

**Watercolors**

**Sculpture**

**FIND US/FRIEND US  
ON FACEBOOK**

[www.riverfrontartgallery.com](http://www.riverfrontartgallery.com)

(707) 775-4278

## THE GALLERY'S CURRENT SHOW

Through March 4

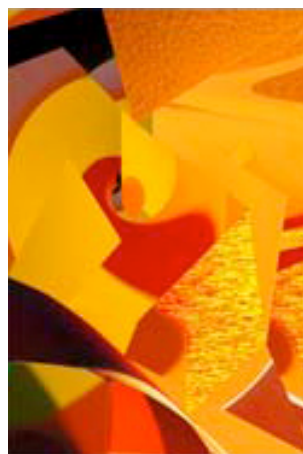
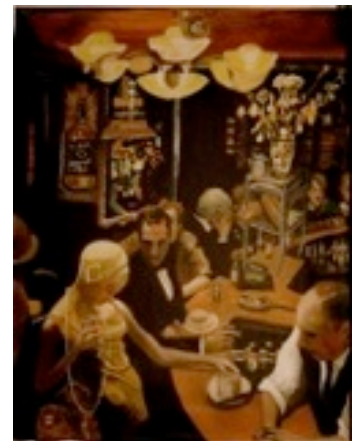
No Art Walk in February

## CURRENTLY ON THE WALLS

### KATHLEEN DEYO'S *LIVING LIFE*

*Living Life* is the evocative title of Kathleen Deyo's Featured Artist show. In it we are treated to a night out on the town through her *Brasserie Julien* oil paintings, done on site at the restaurant and with a flashlight over the easel. She offers us a moment of rest or recuperation in her *Reclining Woman* series and the excitement of weddings and newlyweds in her *Weddings* series. In this show, people are the subject. Come make their acquaintance!

At right: *Brasserie Julien*



### JERRIE JERNÉ'S *COLOR IN MOTION*

Photographer Jerrie Jerné draws upon the color and form of such surprising subjects as pinwheels and street decorations at night as the basis for this Featured Artist show. Her original photographs, often close-ups, have been made into a series of complicated abstracts. Color and form dance, twist, and cavort across the canvas in a group of highly interesting and energetic images. Jerrie's vision and skill have given us a real visual treat.

At left: *Orangina*

#### Gallery's Winter Hours

11:00 am to 6:00 pm Wednesday, Thursday, Sunday

11:00 am to 8:00 pm Friday and Saturday

Closed Monday and Tuesday

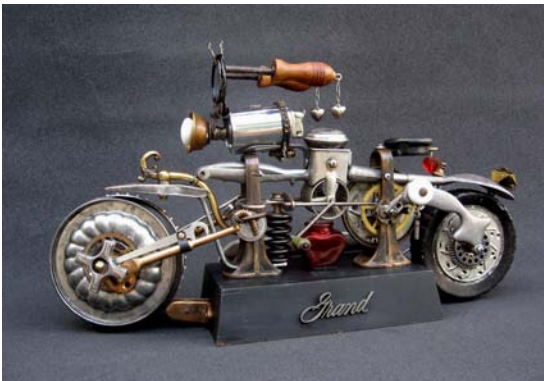
## NEW ASSEMBLAGES BY MONTY MONTY

Monty Monty refers to his unique works as "vintage collectable sculpture and assemblage." His approach includes finding interesting objects "cast-off by our throwaway society, curios, antiques, and sometimes family heirlooms" to combine in imaginative ways and using creative methods.

For example, *Grand Heartley* (below) required roughly 50 parts, plus nuts and bolts. Monty used such diverse items as a Jell-o mold, lighter gas tank, kitchen grater, fondue fork, ice cream spoon, door knob, rolling pin handles, various red and silver hearts, etc. Monty explains, "I do not weld. I take great care in the restoration of each component during my process, giving the work a vintage quality."

In the current show Monty is featuring fanciful vehicles. Each work is accompanied by an autographed photo, artist's statement, poem, story, or inside information on the utilized components.

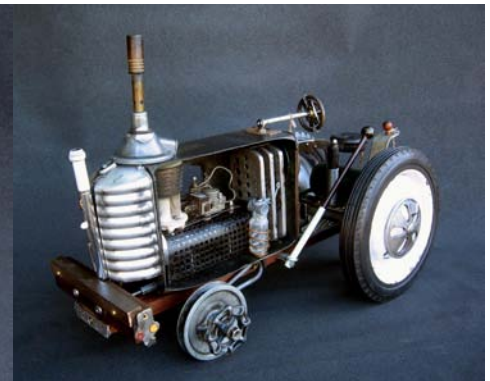
Neat  
Delivery  
Truck



*Grand Heartley*



*Double Duck Buggy*



*Can Tractor*

## THE ART OF LOVE

Oh, yes. We did write that (groan, groan). But really we have a serious point to make, just as Valentine's Day itself makes a serious point.

How will you show your deep-as-the-ocean, everlasting True Love that your love *is* deep-as-the-ocean, everlasting, and true?

Red roses? They wilt.

Chocolates? Brief pleasure causing guilt.

Dinner out? Gone in an evening.

Flashy jewelry? Requires adding flashy wardrobe.

New car? Then what can you afford next year?

Sadly, too many options have disadvantages.

However, a lovely piece of *ART* from

Riverfront has no disadvantages at all,

and, by the enduring pleasure it provides,

it proves your love is everlasting.

That's the *ART* of love!

## GREG ZIRBEL'S HISTORIC-LANDMARK BIRDHOUSES

Psst! Would you like to own Kendall Jackson Winery's mansion? Maybe a solid example of Classic Federal Architecture like the Sonoma County Museum building? Maybe your preferences run to historic farm dwellings like the Greek Revival style Coleman Valley Ranch House. Well have no fear, those properties are available--and no bank loan required!

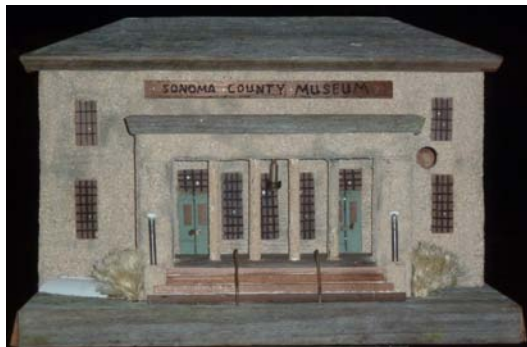
Just head on down to Riverfront and pick up one of Greg Zirbel's birdhouses inspired by local wineries and historic Sonoma County landmarks. These fully functional works of art can hang on a wall, fence, or tree by one nail. Lifting the roof gives you access to a nesting box and a feeder.

For his *Neat Tweets* replicas, Greg uses redwood in his structures, since its natural insecticide properties cut down on bugs and parasites in the nests. Each birdhouse is constructed with specific birds in mind. An accompanying fact sheet gives instructions about suitable hanging sites and probable tenants, as well as historic information.



Kendall Jackson mansion behind Greg Zirbel's replica, a birdhouse with two bluebird nesting boxes and a feeder.

Coleman Valley Ranch House replica for wren, titmouse, nuthatch, house sparrow, or downy woodpecker.



Sonoma County Museum replica for wrens.



### PHOTOGRAPHY WORKSHOP

Riverfront Art Gallery co-owner Lance Kuehne established a series of photography workshops based in Sonoma County. Subsequently he was invited to assist internationally-recognized phototour workshop leaders David Muench and Jack Dykinga in their field workshops.

Coming up soon is his popular five-session workshop on *Photographing the Landscape*. \$275 for 16-18 hours of instruction and field work. Personal attention is guaranteed, since participation is limited to 3 to 7 students.

The workshop includes discussion of equipment, photographic techniques, approaches to landscape photography, subject, composition, lighting, field photography, and a review of the resulting images. Sessions are held weekends and evenings and are scheduled for Feb. 15, 18, 22, 25, 29. Register at:

[http://www.lancekuehne.com/workshops/workshop\\_landscape.html](http://www.lancekuehne.com/workshops/workshop_landscape.html)